



Request for Statement of Interest (SOI)
Phase I/II Engineering Services for
2014 Structural Services #1

The Kane County Division of Transportation is in need of professional services from a qualified engineering firm to provide Phase II Engineering Services as detailed in the attached preliminary scope of work.

The attached *Project Description/Preliminary Scope of Services* provides anticipated items that are necessary as part of the Phase II Engineering Services. The scope of services and contract will incorporate some typical Phase I items.

The County anticipates initiating this work in 2014 with contract duration of approximately 18 calendar months.

A Statement of Interest shall be submitted **VIA KDOTQBS** no later than **4:00 P.M.** on **May 28, 2014**, and should be addressed to **Jennifer O'Connell, P.E., Senior Project Manager**. **The SOI shall be submitted in PDF format viewable with the latest version of Adobe reader.**

Statements of Interest received will be used by County engineering staff to develop a short-list of three (3) firms. The County will then submit a Request for Proposal (RFP) and schedule interviews with the short-listed firms.

For more information regarding the SOI, such as content and format of these items, please reference the QBS document found at <http://www.co.kane.il.us/dot/consultant/selectionProcess.pdf>.

If the respondent plans to utilize a sub-consultant for any portion of this work please note this on the submitted Statement of Interest.

Short-listed firms will be posted at www.co.kane.il.us/dot. Click on the link labeled "Consultant Selection", then click on the link labeled "Consultant Selection Summary Table".

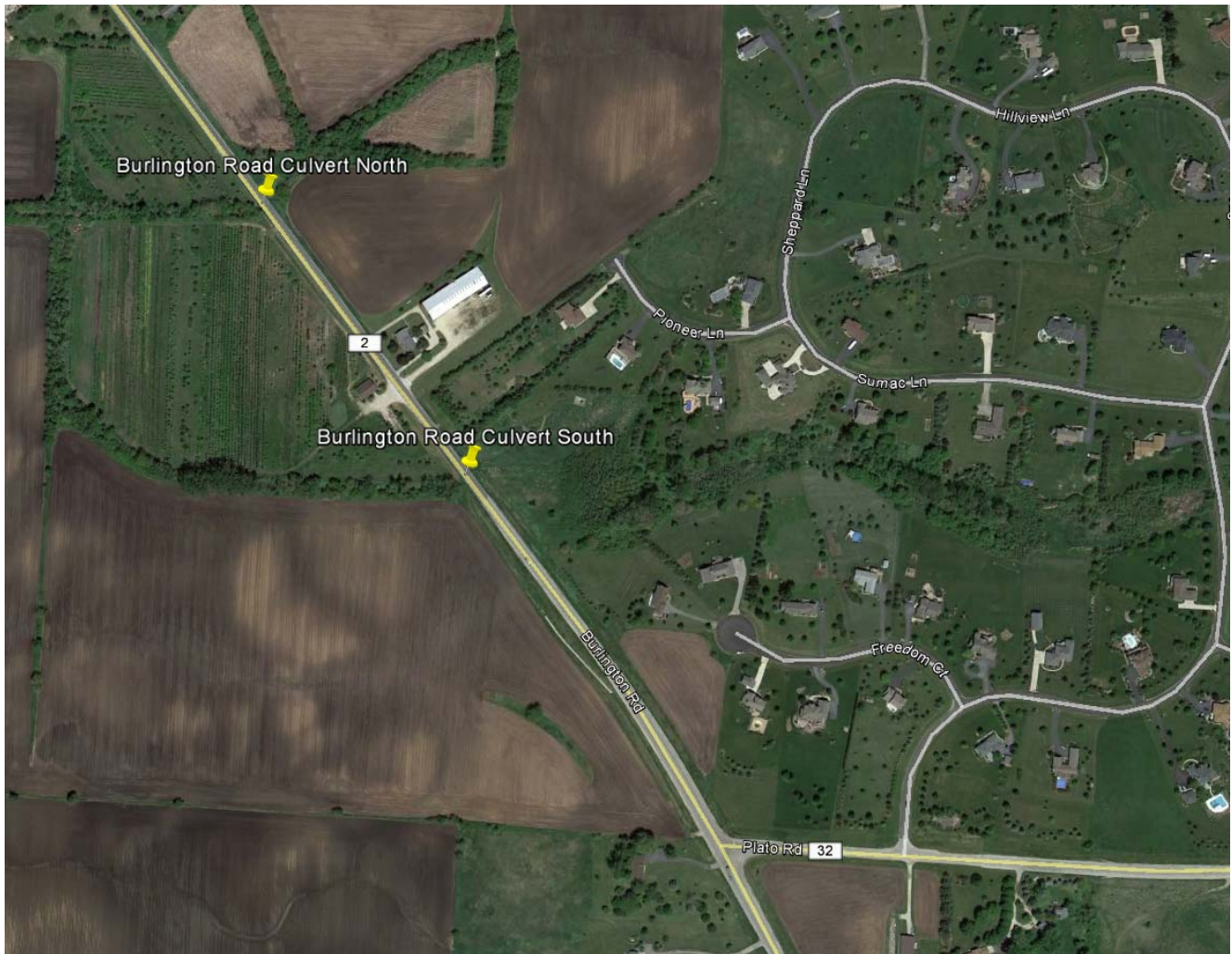
A Statement of Interest (SOI) received after the above noted deadline will not be considered.

2014 Structural Services #1

Project Description/Preliminary Scope of Services

The project consists of design services for the replacement of three structures. All structures will be designed and constructed with local funds. The scope of work for each structure is as follows:

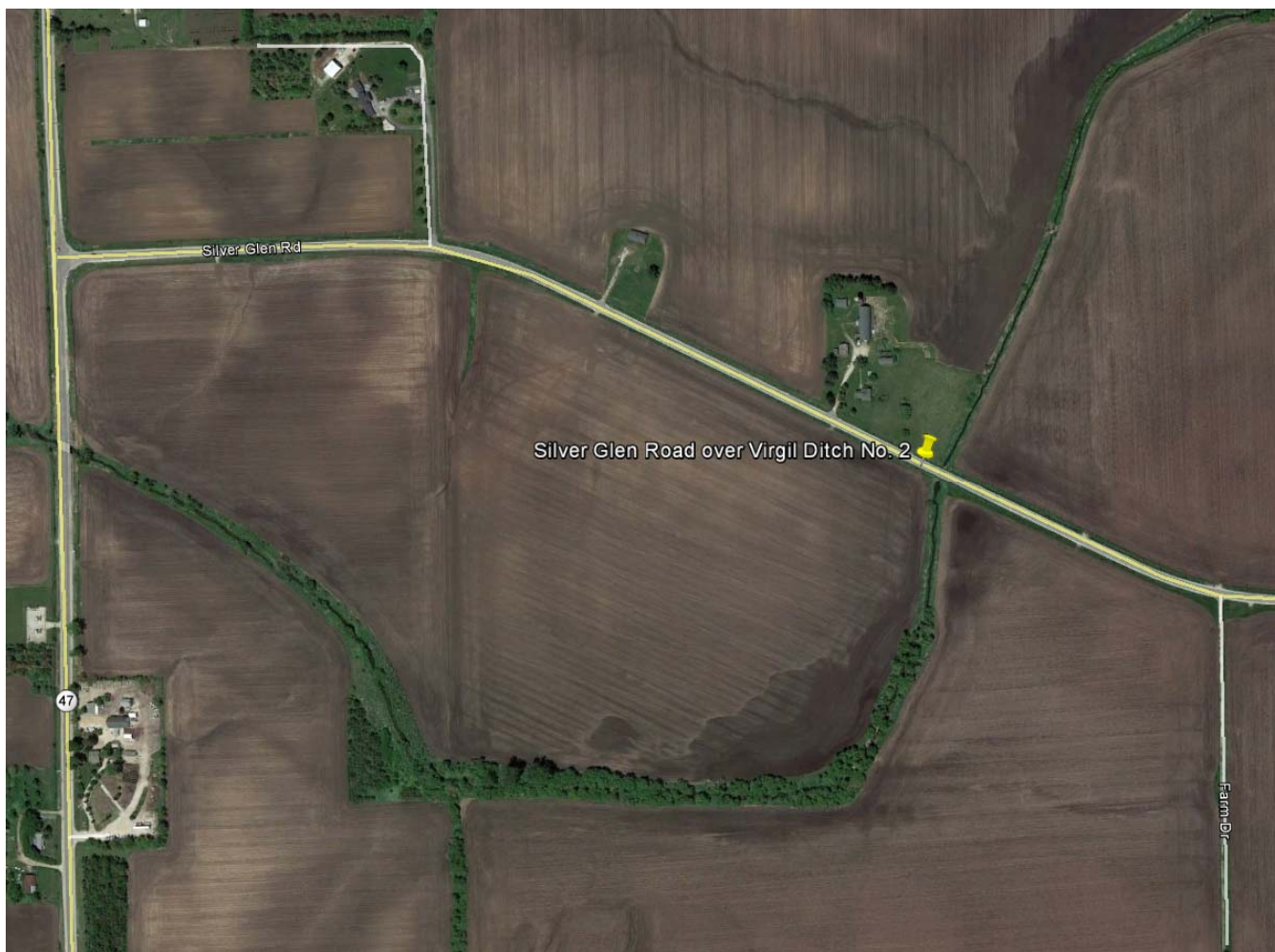
Burlington Road over Tributary to Virgil Ditch No. 3 North and South Culverts



Approximately $\frac{1}{4}$ mile north and $\frac{1}{2}$ mile north of Plato Road are two existing box culverts each with a span less than 35 feet. The work will consist of Phase II engineering services. The services include hydrology/hydraulics and modeled analysis for structure sizing and typing and preliminary roadway geometry as well as engineering design for a replacement structure, roadway profile, shoulder and guardrail design. The selected design consultant will be required to facilitate and secure required permits from all regulatory agencies including the Army Corps of Engineers, IDNR, the Kane-DuPage Soil and Water Conservation District, as required by the scope of the proposed improvements. This includes any required wetland related investigations. The design consultant will be required to certify that the design complies with the Kane County Stormwater Ordinance. Other Phase II Services include:

- Detailed topographic surveys, as necessary, for the planning and design of the project
- Surveys for right of way acquisition and construction easements, and the preparation of plats and legal descriptions
- Soil/pavement investigations, as necessary, to determine roadway section and structural design, as well as CCDD screening
- Drain tile mapping
- Wetland Delineation
- Maintenance of Traffic
- Estimate of construction cost

Silver Glen Road over Virgil Ditch No. 2



Approximately 0.6 miles east of Route 47 is an existing 5' CMP culvert with a span of less than 55 feet. The work will consist of Phase II engineering services. The services include hydrology/hydraulics and modeled analysis for structure sizing and typing, preliminary roadway geometry as well as engineering design for a replacement structure, roadway profile, shoulder and guardrail design. The selected design consultant will be required to facilitate and secure required permits from all regulatory agencies including the Army Corps of Engineers, IDNR, the Kane-DuPage Soil and Water Conservation District, as required by the scope of the proposed improvements. This includes any required wetland related investigations. The design consultant will be required to certify that the design complies with the Kane County Stormwater Ordinance. Other Phase II Services include:

- Detailed topographic surveys, as necessary, for the planning and design of the project
- Surveys for right of way acquisition and construction easements, and the preparation of plats and legal descriptions
- Soil/pavement investigations, as necessary, to determine roadway section and structural design, as well as CCDD screening
- Drain tile mapping
- Wetland Delineation
- Maintenance of Traffic
- Estimate of construction cost

Contact Information

Any questions regarding the project or QBS or Consulting Selection Process should be directed to Jennifer O'Connell at 630-406-7333 or via email at oconnelljennifer@co.kane.il.us.